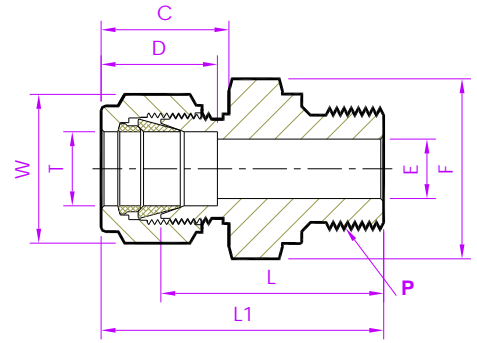


- Tube Fitting (Double Ferrule)-
Tube To Male Pipe Thread



Male Connector

Metric Tube x ISO Parallel (M) - RSIP

Tubefit Part No.	Equivalent Part No. Type 1	Equivalent Part No. Type 2	TUBE	ISO	ØE	D	C	L	L1	Body Hex F	Nut Hex W
			OD	Male Pipe							
			Ø T	P	Dimensions in Millimetres						
			(mm)	(In)							
2M - MCD - 2RSIP	- 2MO-1-2RS	M2MSC1/8R	2	1/8	1.7	12.9	15.3	23.4	30.0	14.2	11.1
3M - MCD - 2RSIP	- 3MO-1-2RS	M3MSC1/8R	3	1/8	2.4	12.9	15.3	23.4	30.0	14.2	11.1
3M - MCD - 4RSIP	- 3MO-1-4RS	M3MSC1/4R		1/4	2.4			28.7	35.3	19	
4M - MCD - 2RSIP	- 4MO-1-2RS	M4MSC1/8R	4	1/8	2.4	13.7	16.1	24.1	30.7	14.2	11.1
6M - MCD - 2RSIP	- 6MO-1-2RS	M6MSC1/8R	6	1/8	4.0	15.3	17.7	24.9	32.3	14.2	14.2
6M - MCD - 4RSIP	- 6MO-1-4RS	M6MSC1/4R		1/4	4.8			30.2	37.6	19	
6M - MCD - 6RSIP	- 6MO-1-6RS	M6MSC3/8R		3/8	4.8			31.5	38.9	22.2	
6M - MCD - 8RSIP	- 6MO-1-8RS	M6MSC1/2R		1/2	4.8			37.3	44.7	27	
8M - MCD - 2RSIP	- 8MO-1-2RS	M8MSC1/8R	8	1/8	4.0	16.2	18.6	25.7	33.2	16	16
8M - MCD - 4RSIP	- 8MO-1-4RS	M8MSC1/4R		1/4	6.4			31.0	38.5	19	
8M - MCD - 6RSIP	- 8MO-1-6RS	M8MSC3/8R		3/8	6.4			32.3	39.8	22.2	
8M - MCD - 8RSIP	- 8MO-1-8RS	M8MSC1/2R		1/2	6.4			38.1	45.6	27	
10M - MCD - 4RSIP	- 10MO-1-4RS	M10MSC1/4R	10	1/4	5.9	17.2	19.5	31.8	39.4	19	19
10M - MCD - 6RSIP	- 10MO-1-6RS	M10MSC3/8R		3/8	7.9			33.0	40.6	22.2	
10M - MCD - 8RSIP	- 10MO-1-8RS	M10MSC1/2R		1/2	7.9			38.9	46.5	27	
12M - MCD - 4RSIP	- 12MO-1-4RS	M12MSC1/4R	12	1/4	5.9	22.8	22.0	32.5	42.6	22.2	22.2
12M - MCD - 6RSIP	- 12MO-1-6RS	M12MSC3/8R		3/8	7.9			33.0	43.1	22.2	
12M - MCD - 8RSIP	- 12MO-1-8RS	M12MSC1/2R		1/2	9.5			38.9	49.0	27	
12M - MCD - 12RSIP	- 12MO-1-12RS	M12MSC3/4R		3/4	9.5			42.7	52.8	35	
16M - MCD - 6RSIP	- 16MO-1-6RS	M16MSC3/8R	16	3/8	7.9	24.4	22.0	33.8	43.9	24	25
16M - MCD - 8RSIP	- 16MO-1-8RS	M16MSC1/2R		1/2	11.9			38.9	49.0	27	
18M - MCD - 8RSIP	- 18MO-1-8RS	M18MSC1/2R	18	1/2	11.9	24.4	22.0	38.9	49.0	27	30
18M - MCD - 12RSIP	- 18MO-1-12RS	M18MSC3/4R		3/4	15.1			42.7	52.8	35	
20M - MCD - 8RSIP	- 20MO-1-8RS	M20MSC1/2R	20	1/2	11.9	26.0	22.0	40.4	50.5	30	32
20M - MCD - 12RSIP	- 20MO-1-12RS	M20MSC3/4R		3/4	15.9			42.7	52.8	35	
22M - MCD - 12RSIP	- 22MO-1-12RS	M22MSC3/4R	22	3/4	15.9	26.0	22.0	42.7	52.8	35	32
22M - MCD - 16RSIP	- 22MO-1-16RS	M22MSC1R		1	18.3			45.2	55.3	41	
25M - MCD - 12RSIP	- 25MO-1-12RS	M25MSC3/4R	25	3/4	15.9	31.3	26.5	45.2	57.5	35	38
25M - MCD - 16RSIP	- 25MO-1-16RS	M25MSC1R		1	19.8			47.8	60.1	41	
28M - MCD - 16RSIP	- 28MO-1-16RS	M28MSC1R	28	1	19.8	36.6	36.6	49.3	69.9	41	46
28M - MCD - 20RSIP	- 28MO-1-20RS	M28MSC1.1/4R		1.1/4	21.8			53.1	72.9	50	
30M - MCD - 20RSIP	- 30MO-1-20RS	M30MSC1.1/4R	30	1.1/4	25.0	39.6	39.2	54.9	76.7	50	50
32M - MCD - 16RSIP	- 32MO-1-16RS	M32MSC1R	32	1	19.8	42.0	41.6	54.4	77.4	46	50
32M - MCD - 20RSIP	- 32MO-1-20RS	M32MSC1.1/4R		1.1/4	25.0			55.9	79.2	50	
38M - MCD - 24RSIP	- 38MO-1-24RS	M38MSC1.1/4R	38	1.1/2	31.8	49.4	47.9	63.2	90.9	55	60

- RSIP parallel threads ends are commonly used with a gasket having a bonded elastomer seal. RPGD type gasket may also be used (RSGD Fitting Gasket)

NOTE : 1)The E Dimension is the minimum opening & Fittings of this group may be back drilling to lager ID at pipe thread or straight thread end.
2)Dimension L1, C, D is shown in the finger-tight position. 3)Dimensions are for reference only and are subject to change 4)ISO (BSP Parallel) thread as per BS 2779.
- ALL PART NUMBERS ARE PROPRIETARY OF THEIR RESPECTIVE OWNERS. -